

# Welcome Home!

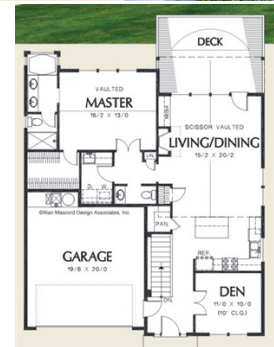


70 Louise View Drive, Bellingham, WA 98229

**WEB: [yoursuddenvallyhome.com](http://yoursuddenvallyhome.com)**

- » **Beds:** 3 | **Baths:** 2 Full, 1 Half
- » **MLS #:** 1092733
- » Single Family | 1,999 ft<sup>2</sup> | Lot: 16,686 ft<sup>2</sup>
- » Pre-Sale in Sudden Valley!
- » Pick Your Finishes!
- » 2 Car garage
- » Community amenities include parks, golf course and Marina.
- » Construction begins June and completed September.

QR Code



**Jack Otto**  
**eXp Realty**  
**(206) 388-6102 (Cell)**  
jack.otto@exprealty.com  
<http://www.jackottohomes.com>



**eXp Realty LLC**  
1321 King Street  
Suite 1  
Bellingham, WA 98229  
(206) 388-6102

This 3-bedroom home plan has it all! Open floor plan, vaulted ceilings, and an abundance of windows provide a spacious, airy feeling. The kitchen is open to the living/dining area. Designed for entertaining, furnished with a gas fireplace and built-ins. Wall of windows invites sunlight in! A large & luxurious master suite located on the main level. The bedroom features a scissor-vaulted ceiling, a wall of windows, and a walk-in closet. 2beds/full bath on the lower level.

Building permit issued and foundation going in this week (sept 19th)  
Builder will be happy to meet with prospective buyer to discuss finishes, colors etc.  
Builder info:  
PCI, inc  
Klinton Moa

